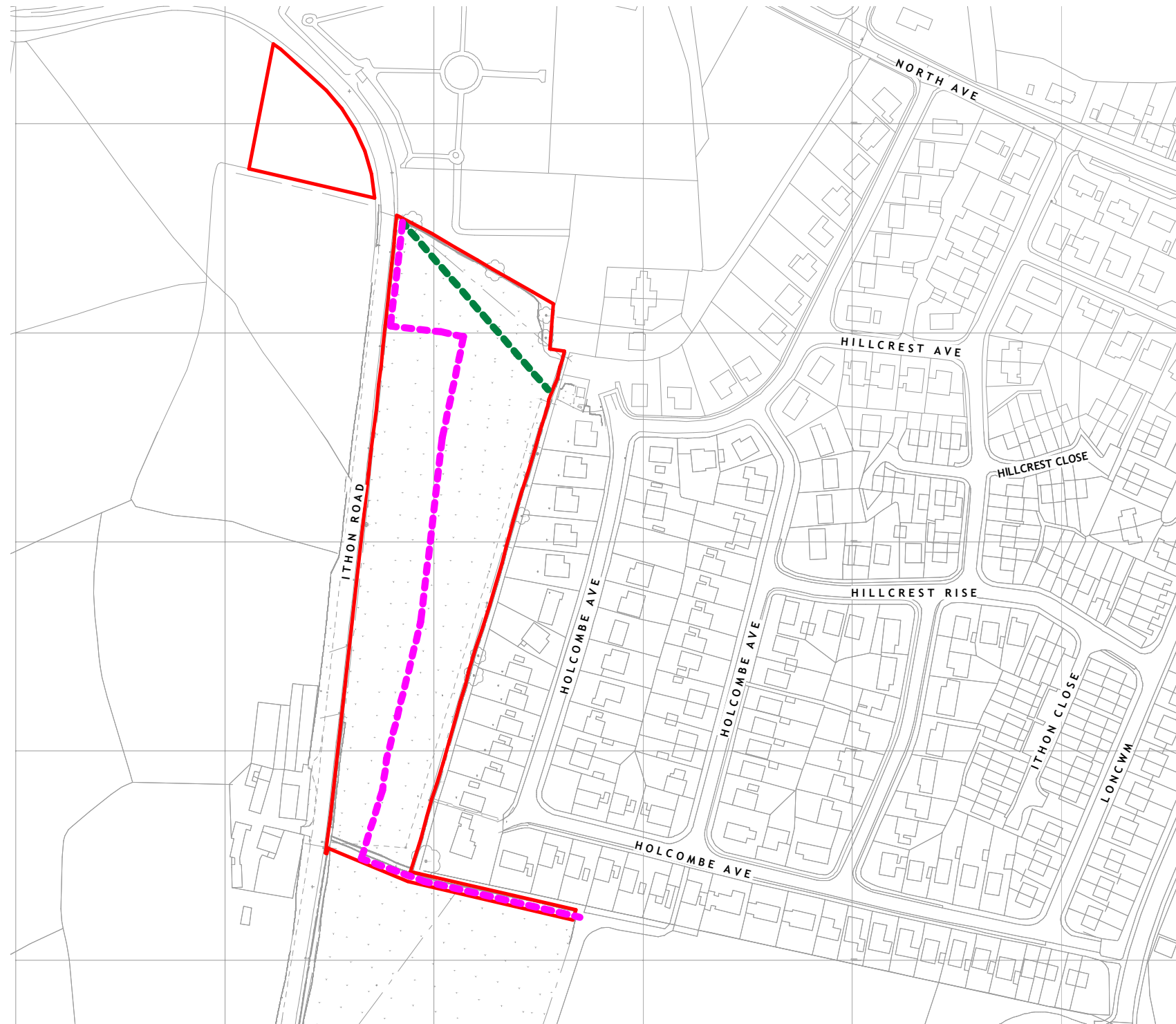


20 0 20 40 60 80 100m

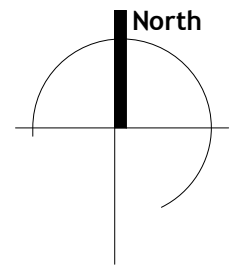


1:2000



Copyright © 2018

Notes:
Do not scale this drawing. Check all dimensions on site. Any discrepancies to be reported back to the Architect for clarity.



KEY

-  EXISTING RIGHT OF WAY
-  DIVERTED RIGHT OF WAY

D	Unit type references updated, minor amendments	PC	03.01.19
C	Field Access gates added, red line boundary amended	PC	19.12.18
B	Drainage design incorporated in scheme, issued for planning	PC	10.12.18
A	Amended following public consultation, issued for planning	PC	15.02.18
Rev	Revision	By	Date



Project:
**LAND OFF ITHON ROAD,
LLANDRINDOD WELLS**

Job Number: **L648**

Date: **10.12.18**

Drawn by: **PC**

Dwg No: **A110**

SITE LOCATION PLAN

Revision: **D**

Scale: **1 : 2500 @ A3**

Drawing Status:
PLANNING



**TONY KING
ARCHITECTS LTD**
97a Glebe Street, Penarth
Vale of Glamorgan CF64 1EE
T: 02920 306400
www.tonykingarchitects.co.uk